



WWW.NZOFFSHORE.CO.NZ



*Presents*

Round 3 of the Offshore Powerboat Series

# **Thunder Out East**

**Gisborne**

**Saturday 4<sup>th</sup> March 2017**

# SPONSORS



Harbourview Marine

For all your Marine and Tackle needs



# ROUND 3

## INTRODUCTION

Welcome to the round 3 of the NZ Offshore Powerboat Championship proudly brought to you by Tourism Eastland and Go Gisborne.

Chris & Kimberly wish you all the best for your Race Day, and hope you enjoy your stay in Gisborne, and would like to thank you all for your support of this event. If we can help in any way you are welcome to call us Chris 0225867732 or Kimberly 0274870687

## PLEASE SUPPORT OUR SPONSORS WHERE POSSIBLE

Meals & Beverages prior and during raceday please try and support the **Tatapouri Fishing Club**.

Fuel from **BP to Go Kaiti**, 146 Wainui Road – Approx 1km from the Tatapouri Fishing Club

Accommodation – **Portside Hotel**

Engineering/Hydraulic requirements – **McCannis & Enzed**

Equipment Hire – **Martins Hiremaster**

Marine requirements – **Harbourview Marine**, 1 Wainui Road

## STREET PARADE

10am CBD

Boats and support vehicles will leave from outside Tatapouri fishing Club at approx. 9.45am.

Due to Council regulations all people taking part in the parade must stay in their vehicles until we get to the start point in Grey Street, maps will be available at briefing, once at Grey Street, you will be able to ride in or on top of your boats for the rest of the parade route. Parade has been restricted to walking speed only, and is a good opportunity to handout sponsors flyers, posters etc. Please ensure there is a person to walk on either side of your boat with Fluro vest on, for safety reasons.

This year's parade will be in conjunction with the Petrol Heads Car Club, so will be approx. double the size of past year's parades.

## MEET AND GREET FRIDAY 3<sup>RD</sup> MARCH

### Meet & Greet Friday 3<sup>rd</sup> March

Meet & Greet will be held at the Tatapouri Fishing Club at from 5pm, at the Shark Bar.

A good chance to meet the local sponsors.

#### **BOAT PARKING**

Boats can be parked in the Port Compound at the end of the Esplanade, by the launching area, this area is covered by Port CCTV, and will be checked randomly by security guard.

The Carson's will be parked on site overnight as well.

#### **ENTRIES AND LAUNCHING OF BOATS**

Day entries and Day Licences - Please help the Bus people by bringing your Day Entries Printed out and filled in. Day entry form has been included in this pack.

Trailer boats are to use the main ramp, just past Tatapouri Fishing Club on the Esplanade. The Crane from CR Taylor's will be available adjacent to the Boat Ramp from 10am onwards on Saturday 4<sup>th</sup> March.

#### **PRIZE GIVING**

The Saturday night prize giving will be held in the Main Bar, at the Tatapouri Fishing Club, dinners are available from 6pm onwards, prize giving will start approx. 7pm.

#### **BOAT RIDES FOR SPONSORS**

A few of the sponsor's have expressed the desire to have a ride in a boat, at this stage we are going to do this between 2-4pm on Friday 3<sup>rd</sup> March.

Graham Pike has offered to help with this, but would dearly love others to give us a hand if possible, as this is the highlight for the sponsors.

We have 12 interested in rides at the moment, but this could change closer to the race.

BP to GO KAITI have offered to supply fuel vouchers to offset some of the costs involved with taking sponsors out.

# PROGRAMME



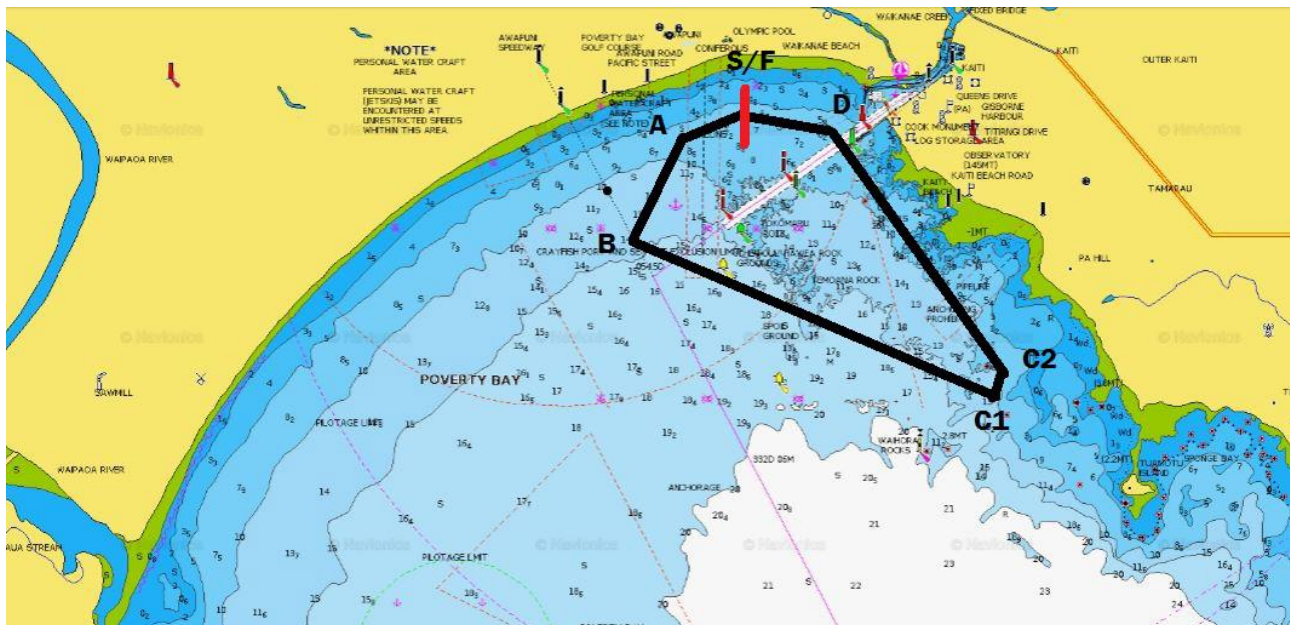
## Race Day

### Saturday, 4<sup>TH</sup> MARCH

7:00 am	Set up team tents, etc. at boat launching area, opposite The Works Café, The Esplanade, space is tight, however we will cone the car parks off the night before for extra space Day Entry open
7:30 – 8:45 am	Scrutineering
8:30am	Day entry Closes
9.00 am	<b>Combined Briefing</b> at race bus – teams and Mark & Patrol boats
9.45am	Street Parade to leave Tatapouri Fishing Club
10.45am	Or on completion of Street Parade - launching
<b>12pm</b>	<b>Race Start (1 hour race)</b>
6pm	Prize Giving at Tatapouri Fishing Club

# GISBORNE 2017

- EVENT ENDS**



# RACE DAY OFFICIALS

<b>Officer of the Day</b>	John McDonald
<b>Safety Officer</b>	John McDonald
<b>Race Starter</b>	TBA
<b>Course/Buoy Officer</b>	TBA
<b>Briefing Officer</b>	John McDonald
<b>Scrutineers</b>	TBA
<b>Race Day Secretary</b>	Jo Lomax
<b>Debriefing Officers</b>	Jo Lomax/Bus Person
<b>Safety Rescue Crew</b>	John Mc Donald & Marine Medical Services
<b>Race Day Judge</b>	TBA
<b>Time Keeper/Lap Scoring</b>	Jo Lomax/Duty Teams
<b>Media Liaison</b>	Denise Preece
<b>Photographer/Website</b>	Jeremy Ward
<b>Event Co-ordinator</b>	Denise Preece
<b>Race Organisers</b>	Chris & Kimberley Lankshear
<b>Duty Teams (Morning and Arvo until dismissed by John M/Jo L)</b>	Hijinx/CRD Automotive

UIM & National Rules shall apply.

Remember to Notify Jo Lomax or John McDonald if you are delayed from Debriefing

NO GO Pro Style cameras on Helmets

Classic Class collect your GPS from Grant Rowe

# Gisborne OffShore

## March 2017

New Zealand Chart #No: 5571

Milling area: The milling area will be behind marks **C1** and **C2** on the inner side of the race line. All boats to assemble at milling area 10 minutes before the start.

Super boats and Super lights start **starboard** side. All other classes on **port** side of start boat.

**Race Starts: 12:00pm** (*approx. 60mins event time*)

Mark **S/F**

Mark **A**

Mark **B1**

Mark **B2**

GPS Co-ordinates will be available on Race Day

Mark **C1**

Mark **C2**

Mark **D**

These GPS co-ordinates are not for navigation purposes and only to identify the area of marks.

Course Layout:

**S/F, A, B, C1, C2, D**

All marks are to **port**, marks **A, B, C1, C2, D** are **NZOPA yellow buoys**. **S/F** Black and white chequered buoy.

First Mark of course from milling area is mark **D** then **S/F**. Then normal course **A, B, C1, C2, D, S/F**. The 60 minute time period starts when the first boat crosses the **S/F** for the first time.

The finish line will be between the Midway Surf Life Saving Club and a black & white chequered buoy on the inner side of the course 200m before mark **A**.

The chequered flag will be raised at the end of 60 minutes to the lead boat. All boats will finish as they complete that lap and then proceed to round mark **A** and then pull into the centre of the course. **Race Parc ferme (Wet)**. Stay there until the race has been completed and proceed to the ramps.

**Race Parc Ferme (Dry) Boat ramp, Tatapouri Fishing Club.**

**Race HQ.** Carpark (bedside Tatapouri boat ramp, NZOPA Truck)

Results posted at race HQ as early as possible after the event closure. These will remain provisional results and after 1 hour will become final results unless a protest of results is given in writing to the race secretary within that 60 minute period.

There are many rules not written here, it is your responsibility to read and understand the rulebook.