



WWW.NZOFFSHORE.CO.NZ



RAMADA®

RESORT

REIA TAIPA BEACH

## **Round 5 of the Offshore Powerboat Series**

# **Doubtless Bay**

## **Saturday 8<sup>th</sup> April 2017**

# SPONSORS

**Ramada Resort Reia Taipa Beach**

**G.A.S Coopers Beach**

**Wiltons Garage & Marine**

**Far North REAP**

**NZME**

**Coopers Beach Marine Sports & Tackle**

**Harcouts Doubtless Bay**

**Murray Bright – Harcouts Doubtless Bay**

**Far North ITM**

**Mangonui Hotel**

**Doubtless Bay Lodge**

**Thirsty Liquor**

**Mangonui Haulage**

**Justa Plumber**

**Coopers Beach Four Square**

**Combie Lockwood**

**Fulton Hogan**

**DB Hire**

**Stan Ash**

**Glen Bradbury - Coastal Homes Ltd**

**Repco Kerikeri**

**Taipa Tavern**

***Acceleration***  
ON WATER  
WATERSPORT EVENT MANAGEMENT



**SHOT360**  
— PHOTOGRAPHY —

# ROUND 5

## INTRODUCTION

Welcome to the beautiful Doubtless Bay Round 5 of the 2017 NZOPA Race Championship sponsored by Ramada Taipa.

The Ramada Resort Reia Taipa Beach at Taipa is going to be race headquarters for the event and will be very busy, please follow all instructions on the day.

Everyone is welcome and there is good viewing along the beachfront where teams' tents will be set up. Ramada Resort has applied for a special liquor licence for directly in front of the Resort Restaurant/Café area and will be setting up an outdoor bar facility.

Please note outside of this special licence area is a liquor ban area so we ask you all to abide by the alcohol rules so that we can make this a fantastic annual event. Notices will be up explaining this.

## A NOTE TO ALL COMPETITORS.

Far North Radio & Sea Rescue will be on Channel 60 All Day

Your contacts up here are:

Tony Banks 021 493580

Hamish Wilton 021 139 6326

Jackie Thompson 09 4060656 (Ramada Taipa)

## SET UP OF TEAM TENTS

Directly across the road from the Ramada Resort Reia Taipa Beach is a grass frontage all team tents can be set up there with their boats directly behind on the road.

## MEET AND GREET FRIDAY 7<sup>TH</sup> APRIL

5.00pm	Road Closure directly in front of the Resort for all parking of boats
5.30pm onwards	Dinner available at the Resort (bookings are recommended)
6.00-6.30pm	Happy Hour at the Resort with complimentary nibbles
7.30pm	Information for Race Day for Teams

## BOAT PARKING AND LAUNCHING OF BOATS

Most motels have limited parking for trailer parking therefore we have closed the Road directly in front of the Ramada Taipa Resort on Friday afternoon from 5.00pm until Sunday morning 9.00am for ALL Boats to be parked in front of the Resort. Flushing facilities are available and there will be Security on duty both evenings plus a shuttle is available if required.

Launching for ALL Superboat 1000 and Superboat 600 Superboat 400 will be at Taipa Wharf or Mill Bay. More information will be provided on Friday evening at 7.30pm in the Ramada Resort Taipa Bar. Dinner is available – bookings are recommended.

Limited Trailer Parking is available at Mill Bay. A Shuttle is available if required & upon request.

#### DAY ENTRIES & DAY LICENSES

Day entries and Day Licences - Please help the Bus people by bringing your Day Entries Printed out and filled in. Day entry form has been included in this pack.

We have secured a fantastic deal with G.A.S Coopers Beach where they are giving EVERY boat \$100 of FREE FUEL. Therefore we ask that ALL boats fuel up at G.A.S Coopers Beach. Please Contact Tony Banks for vouchers.

#### PRIZE GIVING AT RAMADA RESORT REIA TAIPA BEACH

Saturday Evening – Prize giving

Entertainment and a Buffet dinner for \$30.00 per person will be available – bookings would be appreciated for catering numbers and tickets are available at the Resort reception –

Prize Giving will be held at the Ramada Taipa – time to be advised on the day.

2017 NZ OFFSHORE POWERBOAT SERIES

RAMADA RESORT REIA TAIPA BEACH

# DOUBTFUL BAY

WWW.NZOFFSHORE.CO.NZ  
WWW.FACEBOOK.COM/NZOFFSHORE

RACE START 2PM  
BEST VIEWING - RAMADA RESORT TAIPA BEACH

8th APRIL 2017

gas. Coopers Beach

Acceleration

SHOT360 PHOTOGRAPHY



# Race Day Programme

## Saturday, 7<sup>th</sup> April

Saturday 8<sup>th</sup> April

7am	Duty teams to help Shandy put out buoys
7.30am	Set up of marquees, race pits at Taipa
7.40am	Race day entries open
7.30 – 8.30am	Scrutineering of day entries at Ramada Taipa, Championship boats to hand in Self Scrutineering forms to race control
8.30am	Race day entries close
9.00am	Combined Briefing at Ramada Taipa (All competitors, Patrol and Mark boats)

## LAUNCHING AFTER BRIEFING (NO CRANE)

- 2.00pm Race start for the Ramada Taipa Round 5
- 3.00pm Race Finish, Duty teams to help pack buoys in Truck
- 4.30-5pm Pack down of marquees, race pits at Taipa

From 6.00pm – 6.30pm Sponsor happy hour with nibbles provided.

7.00pm - Prize-giving @ Ramada Resort Reia Taipa Beach, Buffet Dinner and entertainment

A shuttle will be available to/from the Resort please see Resort Reception

# RACE DAY OFFICIALS

<b>Officer of the Day</b>	John McDonald
<b>Safety Officer</b>	John McDonald
<b>Race Starter</b>	John Redwood
<b>Course/Buoy Officer</b>	John Shand
<b>START BOAT</b>	<b>TBA</b>
<b>Briefing Officer</b>	John McDonald
<b>Scrutineers</b>	Grant Rowe
<b>Race Day Secretary</b>	Jo Lomax
<b>Debriefing Officers</b>	Jo Lomax/Denise Preece
<b>Safety Rescue Crew</b>	John Mc Donald & Marine Medical Services
<b>Race Day Judge</b>	TBA
<b>Time Keeper/Lap Scoring</b>	Jo Lomax/Duty Teams
<b>Media Liaison</b>	Denise Preece
<b>Photographer/Website</b>	Jeremy Ward
<b>Event Co-ordinator</b>	Denise Preece
<b>Race Organisers</b>	Tony Banks & Hamish Wilton
<b>Duty Teams (Morning and Arvo until dismissed by John M/Jo L)</b>	Outboard Pro, Espresso Engineers, Pist N Broke.

UIM & National Rules shall apply.

Remember to Notify Jo Lomax or John McDonald if you are delayed from Debriefing

NO GO Pro Style cameras on Helmets

Classic Class collect your GPS from Grant Rowe

# Written Instructions

## Doubtless Bay Offshore

### April 2017

New Zealand Chart #No: 5114

Milling Area: The milling area will be halfway between Mark **A** and **Tokerau Beach** in a direct line with A and B. All boats to assemble at the milling area 10 minutes before the start.

Super boats and Super lights start **port** side. All other classes on **starboard** side of the start boat.

<b>Race Starts:</b> 2:00pm		<i>(approx. 60mins event time)</i>	
Mark <b>A</b>	<b>1</b>	34' 58.2237'S	173' 27.2792'E
Mark <b>A2</b>			
Mark <b>B</b>		34' 58.3602'S	173' 30.3254'E
Mark <b>C</b>	<b>1</b>	34' 58.6858'S	173' 30.6189'E
Mark <b>C2</b>			
Mark <b>D</b>		34' 58.8863'S	173' 28.5128'E
Mark <b>S/F</b>			
Mark <b>E</b>		34' 59.0766'S	173' 27.7531'E

These GPS co-ordinates are not for navigation purposes and only to identify the area of marks.

Course Layout:

**S/F, E, A1, A2, B, C1, C2, D**

All marks except Mark **D** are **starboard** marks. Mark **D** you take to **port**. All marks are **NZOPA yellow buoys** and **S/F** black and white chequered buoy.

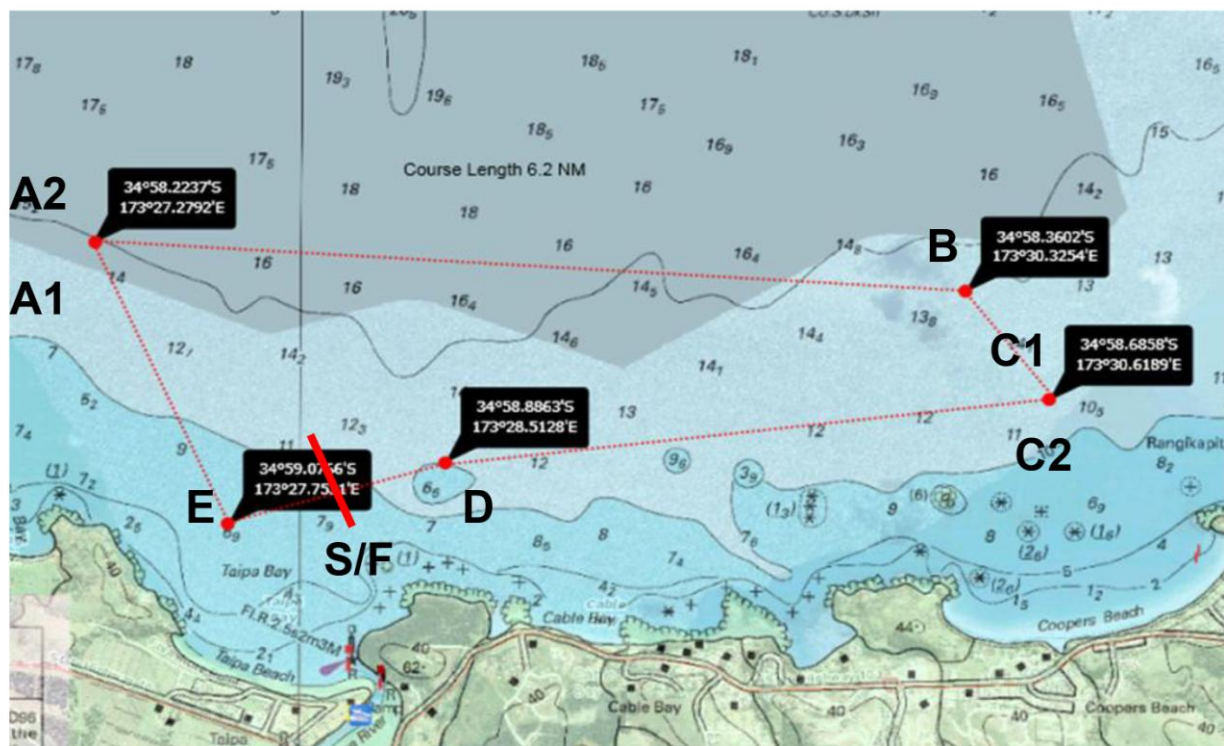
First mark of the course from milling area is Mark **A2**. The 60-minute time period starts when the first boat crosses the **S/F** for the first time.

The finish line will be between the black and white chequered buoy on the inner side of the course between Mark **D** and **E**, 300m before Mark **E**.

All boats passing **S/F** will turn to **starboard** and remain off course until race has finished.

**Race Parc ferme (Wet)**. Stay on inside of course until the race has been completed. Then proceed to recovery areas.

**Race Parc ferme (Dry)**. Ramada Resort, Taipa. **Race HQ Beachfront Remada Resort, Taipa. NZOPA truck.**







## PRE RACE SCRUTINEERING FORM

Race Date: \_\_\_\_\_ Race Location: \_\_\_\_\_

Boat Name: \_\_\_\_\_ Boat # \_\_\_\_\_

### 100 Mile Boats

Ref	Requirement	Tick	Ref	Requirement	Tick
120.01	Licence for class entered		715.04	Manual Bilge Pumps	
205.07	Helmets		715.1	Distress Flares	
508.19	Stop Button / Switches		715.11	First Aid Kit	
508.25	Fire Extinguishers		508.26	Life Vests	
N503	Suitable Tow Line		N705	Outboards / Drives Secure	
N508	Canopies		508.17	Emergency Air Supply	
508.22	Restraint System		715.14	Cell Phone or VHF	
715.12	Tool Kit / Knife		N508	Tanks / Batteries Secure	
N107.5	Steering Secure		508.2	Strobe Light	

### 60 Mile Boats

Ref	Requirement	Tick	Ref	Requirement	Tick
120.01	Licence for class entered		205.07	Helmets	
N504	Race Vests		N541.1	Fire Extinguisher	
N503	Suitable Tow Line		N541.8	Distress Flares	
N541.2	First Aid Kit		N541.7	Compass / GPS	
N541.9	Tool Kit / Knife		N541.3	2 x oars / paddles	
N505	Tanks / Batteries Secure		N508	Seats Secure	
N705	Outboards / Drives Secure		N107.5	Steering Secure	
N541.5	Orange Retirement Flag		N541.6	Engine Kill Switch	

\_\_\_\_\_  
**Competitor Name**

\_\_\_\_\_  
**NZOPA Name**

\_\_\_\_\_  
**Signature**

\_\_\_\_\_  
**Signature**

The competitor declares by signing this form that he / she has inspected the above boat to a reasonable standard and his / her boat conforms to all necessary class rules and safety requirements.

Each team member has completed an Alcohol Test  
using **Lifeloc FC10 Breathalyser**

**Pass / Fail**

Signed by \_\_\_\_\_  
NZOPA Representative



## 2017 DAY LICENCE RACE ENTRY FORM

Race Date:	Race Location:
Boat Name:	Registration #:
Boat Type: <i>Mono / Tunnel / Other</i>	Boat Length:
Brand:	Hull Colour:
Model:	Deck Colour:
Engine(s) Type: <i>Outboard / Inboard</i>	Engine Number:
Make:	Individual/Total Capacity:
Model:	Individual/Total HP:
<b>Driver:</b>	<b>Co-Driver / Throttles :</b>
Address:	Address:
Email:	Email:
Phone:	Phone:
Next of Kin:	Next of Kin:
Phone:	Phone:

Fees (All cheques payable to the NZOPA)	Fee	Total enclosed
All cheques to be made payable to the NZOPA		
Day Licence (x 2 – Driver and Co-driver)	\$60 each	
100 Mile class (4 race maximum) (Driver & Co must hold a current NZOPA Race licence- day licence not valid)	\$120.00	
60 Mile and Classic Class	\$120.00	

**Declaration**

I declare that the above information is correct. I agree to carry out the instructions of the organisation/race officials and accept their decisions as final and binding upon my crew and myself. I indemnify the organising club / association against any losses, damages, or untoward expenses caused or incurred by my crew or myself. I accept all costs incurred due to engine inspections. I consent to the collection of the details on this entry form by the organising club for event registration and promotion purposes and for it to retain, use and disclose these to the New Zealand Offshore Powerboat Association Inc. I acknowledge my right to access and correction of this information. This consent is given in accordance with the Privacy Act 1993.

Driver / Entrant Signature: \_\_\_\_\_

Date: \_\_\_\_\_