



WWW.NZOFFSHORE.CO.NZ

RED STEEL®

GRANT LINNELL
BUILDING

☎ 06 877 8933 ☎ 021 430 959



In association with



Round 6 of the Offshore Powerboat Series

NAPIER 100

Saturday 22nd April 2017

SPONSORS



ROUND 6

INTRODUCTION

Welcome to round 6 of the NZ Offshore Powerboat Championship proudly brought to you by Red Steel in association with Napier City Council

Napier is a thriving seaside town and known worldwide as the Art Deco Capital, vibrant café culture as well as antique shops , art galleries, and plenty of boutique stores.

SET UP OF TEAM TENTS

Tents and Marquees will be allocated on the grassed area in front of the Sailing club, we ask that you please share as space is limited.

PARKING

There will be parking issues in the sailing club complex and priority will be given to boats and tow vehicles. Car only parking available (See Map)

MEET AND GREET

Friday night's meet n greet will be held at the Napier Sailing Club from 6pm onwards.

Please support the Sailing Club.

LAUNCHING OF BOATS

For those boats that require lifting the crane will be set up from the car park at the Sailing Club. Please remember that everyone must wear hard hats while lifting. Trailer boats use the 4 lane ramp at the Sailing Club.

Please allow yourselves plenty of time to negotiate the 5 knot speed limit of the inner harbour area to exit out onto the circuit and on your return to the ramp.

The Harbourmaster has granted us waterway closure from 12.30pm to 3.00pm but this will not exempt boats from exceeding the speed limit in the inner harbour area or on the circuit outside of the waterway closure times.

PRIZE GIVING AT THE SAILING CLUB

The Saturday night prize giving will be held in the Napier Sailing Club beside the Marina.

Meals and bar facilities will be available on Saturday from the Sailing Club. Breakfast is also available on Saturday at the Sailing Club from 8am.

Please make sure your team supports the local venue that helps make this Napier event possible.

Prize giving starts at 7.00pm sharp.

ACCOMMODATION

For any teams that have not yet managed to secure accommodation please try

- Bluewater Hotel - Phone 068358668
- Anchorage Motor Lodge - Phone 0800422266
- Marine land Motel - Phone 068352147

PROGRAMME

Venue: Napier Sailing Club

Friday 21st April

6pm onwards: Meet N Greet.



Race Day

Saturday, 22nd April

- | | |
|--------------|--|
| 8.00-10.30am | Breakfast available from Napier Sailing Club |
| 7.30-9.00am | Race Boat Scrutineering at the Napier Sailing Club |
| 9.00am | Day entry closes |
| 9:30am | Drivers and Control /Briefing at Napier Sailing Club |
| 10.00am | Patrol and Marker boats briefing. |

1pm Race Start (1 hour race)

Excellent viewing from the Perfume Point, at the end of the inner harbour channel.

- | | |
|--------|---|
| 5.00pm | Clear all marquees from sailing club ramp area. |
| 6.30pm | Buffet Dinner at Napier Sailing Club. |
| 7.00pm | Prize Giving |
| 8.00pm | Band - and partying at the Napier Sailing Club. |

RACE DAY OFFICIALS

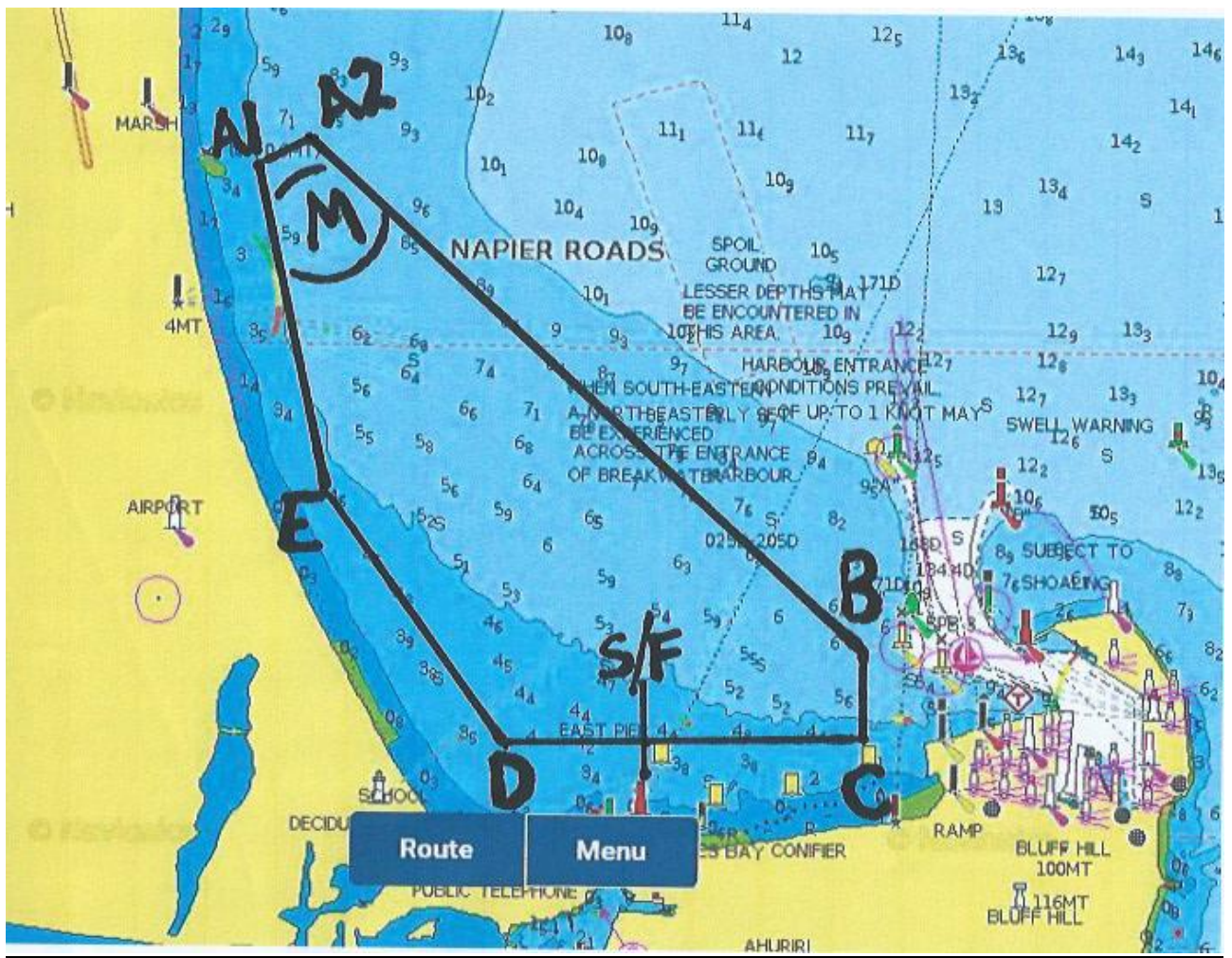
Officer of the Day	John McDonald
Safety Officer	John McDonald
Race Starter	TBA
Course/Buoy Officer	TBA
Briefing Officer	John McDonald
Scrutineers	TBA
Race Day Secretary	Jo Lomax
Debriefing Officers	Jo Lomax/Denise Preece
Safety Rescue Crew	John Mc Donald & Marine Medical Services
Race Day Judge	TBA
Time Keeper/Lap Scoring	Jo Lomax/Duty Teams
Media Liaison	Denise Preece
Photographer/Website	Jeremy Ward
Event Co-ordinator	Denise Preece
Race Organisers	Colleen Carson /Denise Preece
Duty Teams (Morning and Afternoon until dismissed by John M/Jo L)	NZ Home Loans, Red Steel and D&H Steel

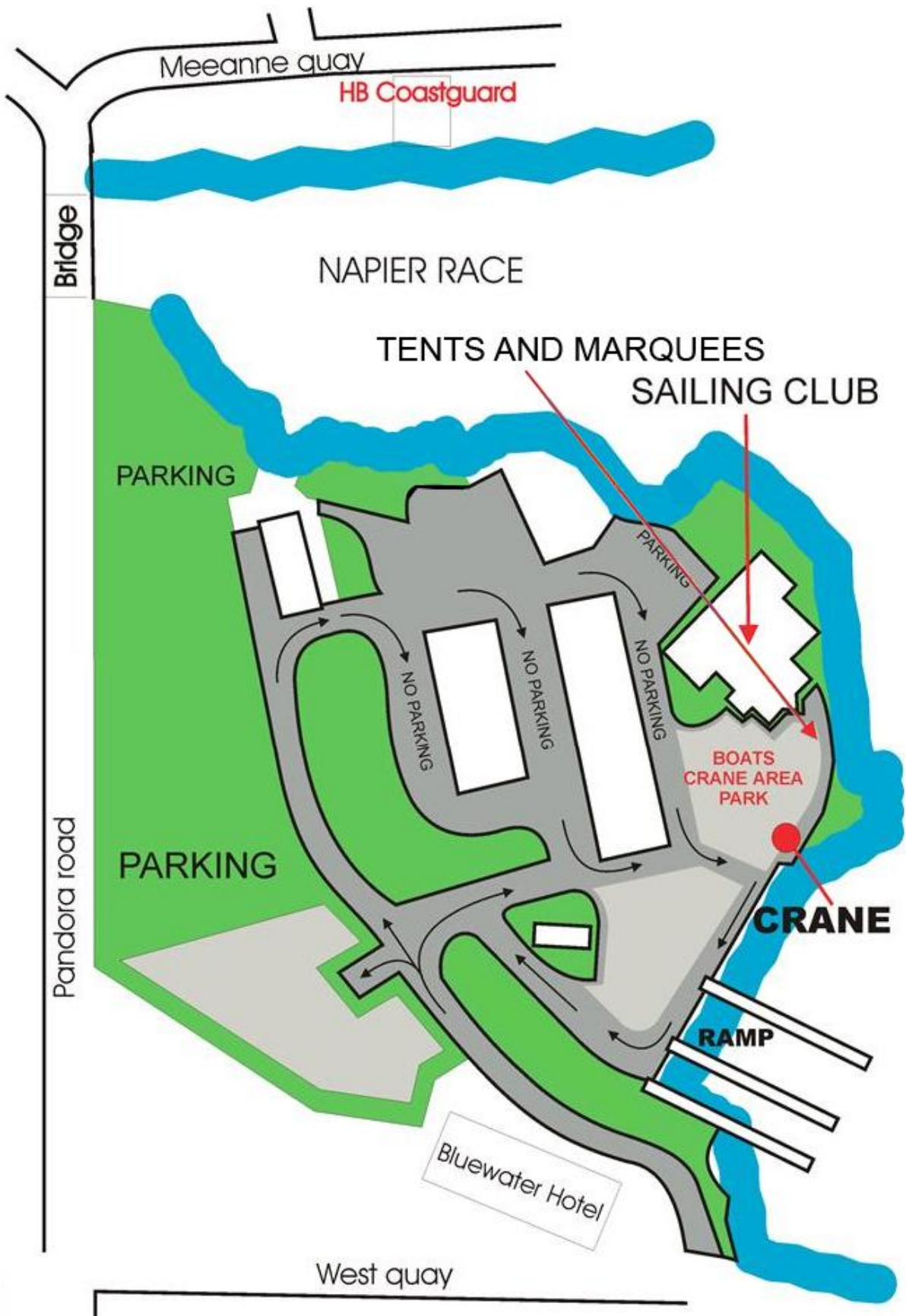
UIM & National Rules shall apply.

Remember to Notify Jo Lomax or John McDonald if you are delayed from Debriefing

NO GO Pro Style cameras on Helmets

Classic Class collect your GPS from Grant Rowe





Napier Off Shore April 2017

New Zealand Chart #No: 561

Milling Area: The milling area will be 100m south of Mark A1 and A2.

Course is clockwise. All boats to assemble at the milling area 10 minutes before the start.

Super boats, Super lights and Classics start **starboard** side. All other classes on **port** side of the start boat.

Race Starts: 1:00pm (approx. 60mins event time)

Mark A1

Mark A2

Mark B

Mark C

Mark S/F

Mark D

Mark E

These GPS co-ordinates are not for navigation purposes and only to identify the area of marks.

Course Layout:

S/F, D, E, A1, A2, B, C

All marks are **starboard** marks. All marks are NZOPA yellow buoys and S/F black and white chequered buoy.

First mark of the course from milling area is Mark B. The 60 minute time period starts when the first boat crosses the S/F for the first time.

The finish line will be between the black and white chequered buoy on the inner side of the course between Mark C and D, opposite Perfume Point.

All boats passing S/F will turn to **starboard** and remain off course until race has finished then return to harbour.

Race Parc ferme (Wet). Stay on inside of course until the race has been completed. Then proceed to recovery areas.

Race Parc ferme (Dry). Napier Sailing Club. Race HQ Napier Sailing Club Carpark, NZOPA Truck.