



WWW.NZOFFSHORE.CO.NZ

Marsden Cove Marine Ltd

**Round 3 of the NZ Offshore Powerboat
Championship Series**

Whangarei Harbour

Marsden Cove

Saturday 15th May 2021

With thanks to our
sponsors



RayWhite

Bream Bay





ROUND 3

INTRODUCTION

Welcome to round 3 of the NZ Offshore Powerboat Championship proudly brought to you by Marsden Cove Marine Ltd, Marsden Maritime Holdings, Marsden Marine Supplies, Ray White Bream Bay, Trigg Construction.

Steve & Denise welcome the opportunity to host you all at Marsden Cove the locals love having you all here as well.

MEET AND GREET FRIDAY 14TH MAY

Kick off Friday afternoon 4.30pm. The Marsden Cove Fishing Club will be open which is Across from our shop. The Land & Sea Café is also beside the Fishing Club if you wish to have a meal you need to get orders in before 8pm

BOAT PARKING AND LAUNCHING OF BOATS

Boats can be parked at our shop, Marine & Engineering Supplies and also the sections beside our shop .Overnight security provided. All boats can be launched either at the Marsden Cove Marina boat ramp or on the new ramp beside our shop. Wash down facilities will be available after the race beside our shop. There is also parking across the road from the shop.

ENTRIES –REGISTRATION & BREAKFAST

Day entries and Day Licences - Please help the girls by bringing your Day Entries Printed out and filled in. Day entry form has been included in this pack. Day entries boats to be pre-race checked by Phil Mudford. Championship boats please bring your Pre-race Scrutineering forms marked off to Registration prior to Briefing time. Registration will be at the Marine Shop Saturday morning; from 7.00am Marine & Engineering Supplies will be sponsoring breakfast Bacon Buddies, Sausages. We have a bakery in the Marina which opens at 5am so you will be able to get a nice coffee from them or the Café opens at 8am

FURTHER PRIZE GIVING AT MARSDEN COVE FISHING CLUB

Marsden Cove Fishing Club 6pm onwards, Meals are available at the Land & Sea Café right beside the fishing club orders must be in by 8pm. Prize Giving at 6pm before the band "Yorke sound" starts at 7.00pm until 11.pm

Marsden Cove also has a taxi service 'Marsden Point Taxi phone: David 0210327660 he will be happy to take you to and from the Fishing Club. Denise also has a 6 seater available for pick-ups and drop offs for a gold coin donation.

VIEWING OF THE RACE

Best viewing of the race will be in front of the Marsden Cove Yacht Club which is on One Tree Point road. They will have the bar open from 11am-2pm and will also have food available to purchase while you watch the race.

ACCOMMODATION

Motor homes are okay on site, you can use the facilities in our Marine Shop we have toilets or check the links below

www.bachcare.co.nz/holiday-homes-accommodation/northland/one-tree-point
www.bookabach.co.nz
www.otpmotel.co.nz

If anyone needs assistance with finding accommodation please contact Denise on 027 250 3504

Please note if you are arriving by helicopter there are 2 Heli Pads across the road from the main boat ramp you are welcome to use.

PROGRAMME



Race Day

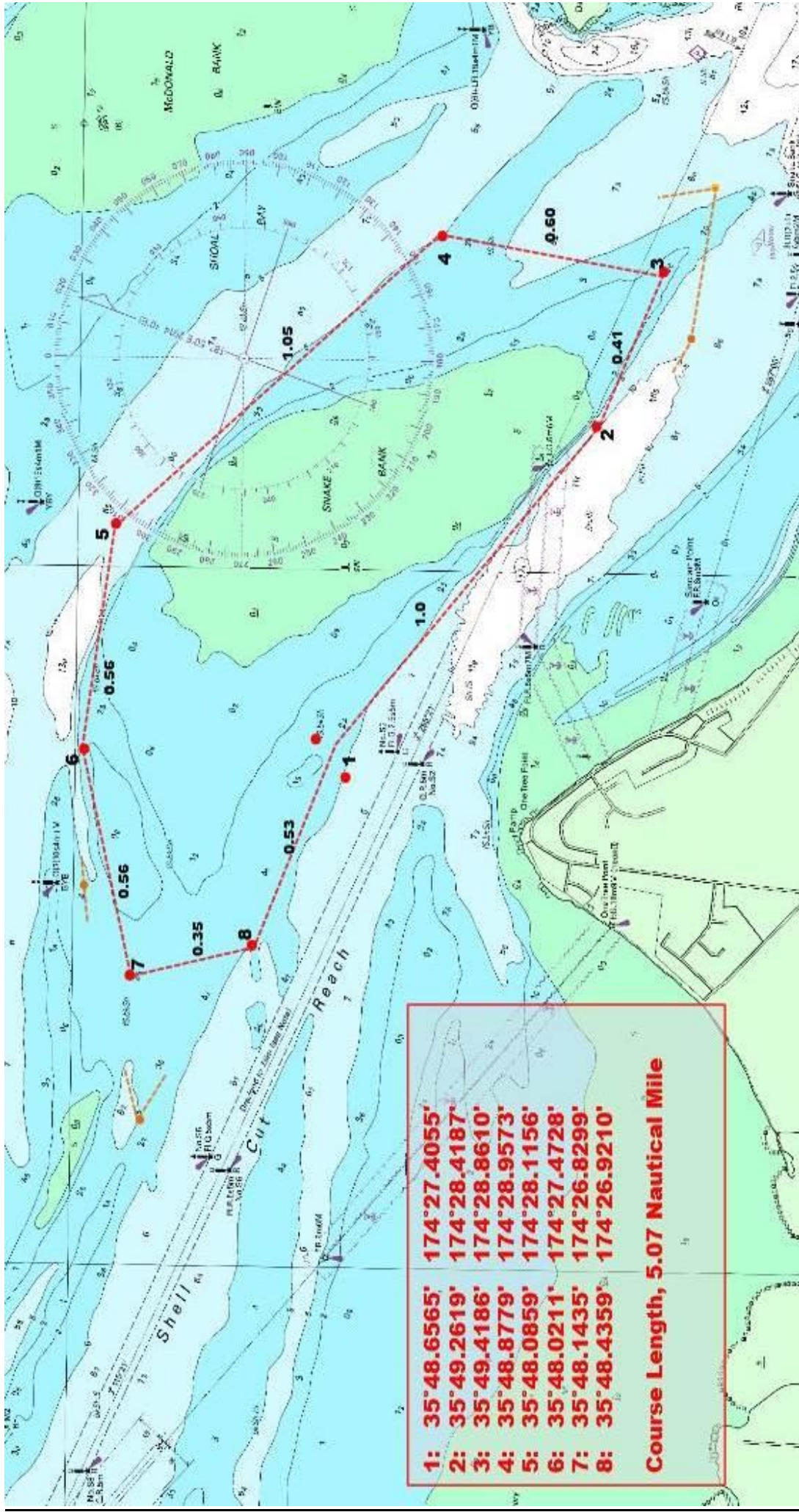
Saturday 15th May

7.00 am	Registration at Marine & Engineering Supplies Breakfast provided by Steve & Denise at Marine & Engineering supplies shop. Team Tents can be set up at the Marquee.
7.00am	Day Entries open
7:30 – 8:30 am	Scrutineering
8.30am	Day entries close
9.00 am	Briefing at race control
9.30 am	Patrol and Marker boats briefing.
11.30am	1st Half Hour race starts
12.30pm	2nd Half Hour race starts (time dependent on what time last boat crosses start/finish line in first race)
3pm	Sausage Sizzle at the tent
4pm	Fishing Club is open
6-8pm	Meals available from Land & Sea (MUST HAVE your orders in before 8pm)
6 .00pm SHARP	Prize Giving
7.00pm	Band - "York Sound "

RACE DAY OFFICIALS

Officer of the Day	Phil Mudford
Safety Officer	Phil Mudford
Official Race Start Boat	TBA
Race Starter	Malcom Hutchings
Course/Buoy Officer	Coastguard /Steve Preece
Briefing Officer.	Phill Mudford
Scrutineers	Phil Mudford/John Redwood
Race Day Secretary	Rebecca Lewis
Debriefing Officer	Rebecca Lewis
Safety Rescue Crew	Phil Mudford & Pro Med Services
Race Day Judge	TBA
Lap Scorers	Jeanette Hanley/Denise Preece/Janine Hutchings/Yvonne Garred
Media Liaison	Denise Preece
Event Co-ordinator	Denise Preece
Race Organisers	Denise and Steve Preece

UIM & National Rules shall apply.
NO GO Pro Style cameras on Helmets
Classic Class collect your GPS from Phil Mudford





PRE-RACE SCRUTINEERING FORM

Race Date: _____ Race Location: _____

Boat Name: _____ Boat: _____

100 Mile Boats

Ref	Requirement	Tick	Ref	Requirement	Tick
120.01	Licence for class entered		715.04	Manual Bilge Pumps	
205.07	Helmets		715.1	Distress Flares	
508.19	Stop Button / Switches		715.11	First Aid Kit	
508.25	Fire Extinguishers		508.26	Life Vests	
N503	Suitable Tow Line		N705	Outboards / Drives Secure	
N508	Canopies		508.17	Emergency Air Supply	
508.22	Restraint System		715.14	Cell Phone or VHF	
715.12	Tool Kit / Knife		N508	Tanks / Batteries Secure	
N107.5	Steering Secure		508.2	Strobe Light	

60 Mile Boats

Ref	Requirement	Tick	Ref	Requirement	Tick
120.01	Licence for class entered		205.07	Helmets	
N504	Race Vests		N541.1	Fire Extinguisher	
N503	Suitable Tow Line		N541.8	Distress Flares	
N541.2	First Aid Kit		N541.7	Compass / GPS	
N541.9	Tool Kit / Knife		N541.3	2 x oars / paddles	
N505	Tanks / Batteries Secure		N508	Seats Secure	
N705	Outboards/ Drives Secure		N107.5	Steering Secure	
N541.5	Orange Retirement Flag		N541.6	Engine Kill Switch	

Competitor Name

NZOPA Name

Signature

Signature

The competitor declares by signing this form that he / she has inspected the above boat to a reasonable standard and his / her boat conforms to all necessary class rules and safety requirements.

Each team member has completed an Alcohol Test
using Lifeloc FC10 Breathalyser

Pass / Fail

Signed by _____
NZOPA Representative



2021 DAY LICENCE RACE ENTRY FORM

Race Date:		Race Location:	
Boat Name:		Registration #:	
Boat Type: <i>Mono / Tunnel / Other</i>		Boat Length:	
Brand:		Hull Colour:	
Model:		Deck Colour:	
Engine(s) Type: <i>Outboard / Inboard</i>		Engine Number:	
Make:		Individual/Total Capacity:	
Model:		Individual/Total HP:	
Driver:		Co-Driver / Throttles:	
Address:		Address:	
Email:		Email:	
Phone:		Phone:	
Next of Kin:		Next of Kin:	
Phone:		Phone:	
Fees (All cheques payable to the NZOPA)		Fee Day/2 day event	Total enclosed
All cheques to be made payable to the NZOPA			
Day Licence (x 2 – Driver and Co-driver)		\$30.00	
100 Mile class (4 race maximum) (Driver & Co must hold a current NZOPA Race licence- day licence not valid)		\$600/\$1100	
60 Mile and Classic Class (1 st time competitors \$200.00 for 1 race only)		\$300/\$550	
Declaration			
<p>I declare that the above information is correct. I agree to carry out the instructions of the organisation/race officials and accept their decisions as final and binding upon my crew and myself. I indemnify the organising club / association against any losses, damages, or untoward expenses caused or incurred by my crew or myself. I accept all costs incurred due to engine inspections. I consent to the collection of the details on this entry form by the organising club for event registration and promotion purposes and for it to retain, use and disclose these to the New Zealand Offshore Powerboat Association Inc. I acknowledge my right to access and correction of this information. This consent is given in accordance with the Privacy Act 1993.</p>			